

Stijlnummer	5T586	
Collectie	Floor Architecture III	
Producttype	Tapijttegel	
Construction	Standard	Data + Performance
Type Fabricage	ISO 2424	tufted 1/10"   39.4 per 10cm
Uitzicht	ISO 2424	Multilevel-Patroonlus
Verfmethode	EN 994	100% In Oplossing Geverfd
Productformaat	EN 994	50 cm x 50 cm   20 tiles (5 m²) per box
Primaire Backing	ISO 2424	Pet Nonwoven
Secundaire Backing	ISO 2424	Taskworx® Tegel   Polymeer Gemodificeerd Bitumen
Vezel	ISO 2424	Ecosolution Q® Polyamide 6
Totale Dikte	ISO 1765	6.8 mm
Afgewerkte Pooldikte	ISO 1766	2.7 mm
Totale Massa	ISO 8543	3825 g/m²
Getuft Gewicht	ISO 2424	630 g/m²
Effectieve Poolmassa	ISO 8543	297 g/m²
Pooldichtheid	ISO 8543	0.108 g/cm³
Totaal Gerecycleerde Inhoud		49% (pre-consumer 49%   post-consumer 0%)

Gegevens

Steken	ISO 1763	165,000/m²   42 per 10cm
Elektrostatische Weerstand	ISO 6356	≤ 2.0 kv (Stroll Test)
Gebruik Classificatie	EN 1307	33 Commercial Heavy
Luxeklasse	EN 1307	LC1
Dimensionale Stabiliteit	EN 986	≤ 0.2%
Contactgeluidsisolatie	ISO 10140	26db
Geluidsabsorptieclassificatie	ISO 354/11654	0.15 Aw   Class E
Warmteweerstand m² K/w	ISO 8302	0.077 M² K/W Tog 0.77
Weerstand Tegen Droog Uitglijden	ISO 13893	Pass / No Pulled Loops
Kleurvastheid Voor Licht	ISO 105-B02	>6
Ontvlambaarheid	EN 13501-1	Bfl-S1 (Adhered Testing)
Stoel Met Wieltjes	EN 985	≥2.4 Continuous USe

15 Jaar Commercieel Beperkt subject to installation in full accordance with manufacturer's instructions and a regular effective cleaning and maintenance programme.

Aanbevolen Installatiemethode

Monolithic

Quarter Turn

Brick

Ashlar

Random

26dB

Corporate Headquarters +1 800 257 7429 | +1 706 532 7984 | Atlanta +1 404 853 7429 | Bengaluru +91 80 6773 0202 | Beijing +86 10 6568 588 | Chicago +1 312 467 1331 | Dubai +971 4 584 6956 | Hong Kong +852 2623 0371 | Latin America (Miami) +1 305 827 5912 | London +44 207 961 4120 | Los Angeles +1 800 233 1614 | Melbourne +61 3 9939 8543 | Mexico City +55 5010 7600 | Mumbai +91 22 6284 5050 | Nantong +86 400 800 7429 | New York +1 212 953 7429 | Paris +33 (0) 1 81 22 44 39 | San Francisco +1 415 955 1920 | Santiago +562 2431 5000 x 550 | São Paulo +55 11 3071 1702 | Shanghai +86 21 3338 4000 | Singapore +65 6733 1811 | Sydney +1 800 556 302

Coördinerende Producten

Carpet Tile: **Stone Comfortworx® Tile, Fragment Comfortworx® Tile, Formation Colours Comfortworx® Tile, Fragment Colours Comfortworx® Tile, Stone Colours Comfortworx® Tile, Formation Comfortworx® Tile, Fragment Taskworx® Tile, Stone Taskworx® Tile, Formation Colours Ecoworx S Tile, Fragment Colours Ecoworx S Tile, Formation Colours Taskworx® Tile, Fragment Colours Taskworx® Tile, Fragment Ecoworx S Tile, Stone Ecoworx S Tile, Formation Taskworx® Tile, Formation Ecoworx S Tile, Stone Colours Ecoworx® S Tile**

Kenmerken + Certificeringen

Certifications Below Apply Exclusively To The Carpet Tile Rug Itself And Not The Lokworx Tabs Adhesive

Cradle to Cradle gecertificeerd™	<b>Bronzen Vlak (Versie 3.1)</b>
Environmental Product Declaration (EPD)	<b>3de Partij Gecertificeerd in Overeenstemming Met ISO14044, ISO14025 &amp; EN15804</b>
milieugarantie	<b>Terugnamebeleid Aangeboden Voor Alle Taskworx Producten</b>
ISO 9001	<b>Gecertificeerd</b>
land van herkomst	<b>Verenigd Koninkrijk</b>
BREEAM Contribution Credit	<b>Certificate of Approval Schools/Offices/Health/Industrial Shed Retail</b>

Well V2 Contribution Credit

X08 Hazardous Material Reduction Part 1: Limit Hazardous Materials Optimization	<b>C2C Bronze Level (Version 3.1)</b>
X10 Volatile Compound Reduction Part 1 (A): Manage Volatile Organic Compounds (VOCs) Optimization	<b>C2C Bronze Level (Version 3.1)</b>
X10 Volatile Compound Reduction Part 2: Manage Semi-Volatile Organic Compounds (SVOCs) Optimization	<b>C2C Bronze Level (Version 3.1)</b>
X11 Long Term Emissions Control Part 2: Flooring Optimization	<b>M1&gt; Emissions Class For Building Material</b>
X13 Enhanced Material Precaution Part 1: Select Optimized Materials Optimization	<b>C2C Bronze Level (Version 3.1)</b>
X14 Material Transparency Part 1: Promote Ingredient Disclosure Optimization	<b>C2C Bronze Level (Version 3.1)</b>

Groen Leed Bijdragekrediet

"MR-krediet: openbaarmaking en optimalisering van bouwproducten Milieuproductverklaringen - Optie 1: Milieuproductverklaring (EPD)"	<b>3rd Party Certified in Accordance with ISO14044, ISO14025 &amp; EN15804</b>
"MR-krediet: Openbaarmaking en optimalisering van bouwproducten MateriaalIngrediënten - Optie 1: Rapportage materiaalIngrediënten"	<b>C2C Bronze Level (Version 3.1)</b>
"MR-krediet: openbaarmaking en optimalisering van bouwproducten MateriaalIngrediënten - Optie 2: Optimalisering van materiaalIngrediënten"	<b>C2C Bronze Level (Version 3.1)</b>

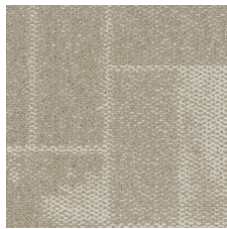
Air Quality

M1	<b>Certified</b>
----	------------------

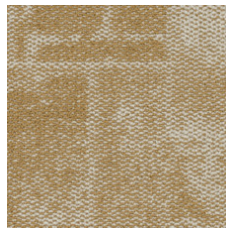
Memberships

WGBC Framework	<b>WGBC Framework</b>
UKGBC	<b>UKGBC</b>
Emirates Green Building Council	<b>Emirates Green Building Council</b>
Chemsec	<b>Chemsec</b>

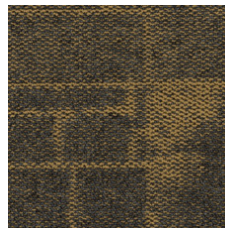
## Lichtreflectiewaarde



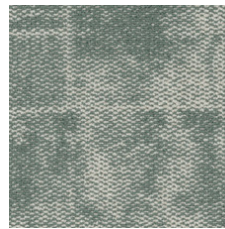
Oatmeal 04111  
LRV 31.9



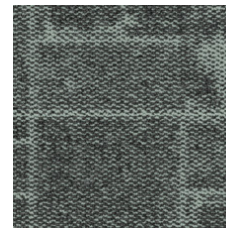
Brushed Gold 04210  
LRV 24.6



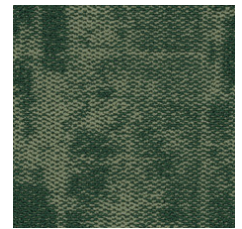
Midnight Brushed Gold  
04211  
LRV 8.1



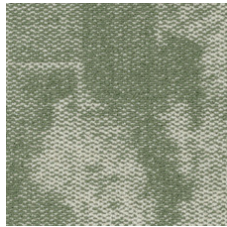
Mineral 04327  
LRV 22.9



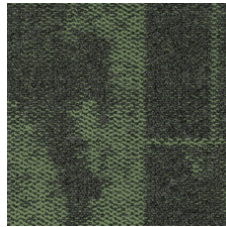
Midnight Mineral 04328  
LRV 12.5



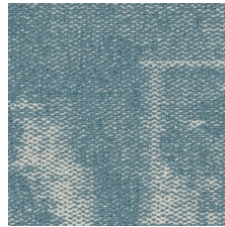
Racing Green 04334  
LRV 6.2



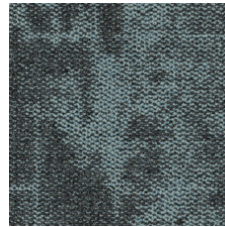
Sage 04375  
LRV 22.3



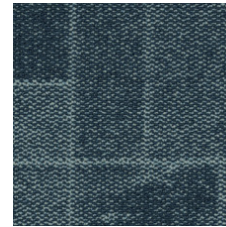
Midnight Sage 04376  
LRV 7.5



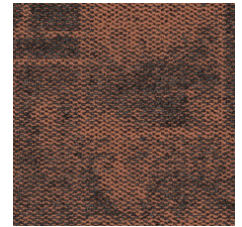
Sky 04411  
LRV 24.9



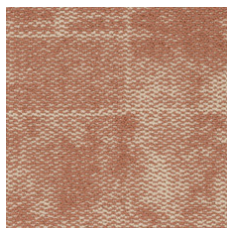
Midnight Sky 04412  
LRV 9.6



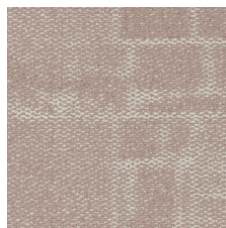
Denim 04486  
LRV 10



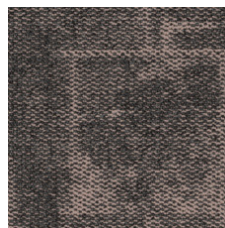
Midnight Apricot 04674  
LRV 7.8



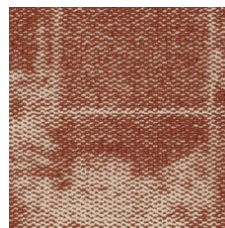
Apricot 04675  
LRV 23.4



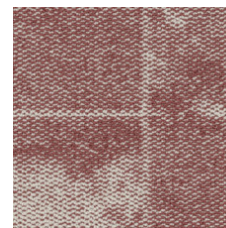
Powder Pink 04800  
LRV 30.1



Midnight Powder Pink  
04801  
LRV 11.4



Copper 04865  
LRV 18.9



Rosewood 04870  
LRV 18.8

## Aanvullende Informatie

\*\*Manufactured in ISO 9001 certified facility. Meets or exceeds all local and national regulations in country of manufacture.

### Installation Guidelines

### Maintenance Guidelines

15 jaar commercieel beperkt

Specifications are subject to nominal manufacturing variance. Material supply and/or manufacturing processes may necessitate changes without notice.

This product is an exclusive design and may not be duplicated in any manner. Use of this design in the creation of another product design is also strictly prohibited.

Visit [shawcontract.com/testing](https://shawcontract.com/testing) for more information.



Corporate Headquarters +1 800 257 7429 | +1 706 532 7984 | Atlanta +1 404 853 7429 | Bengaluru +91 80 6773 0202 | Beijing +86 10 6568 588 | Chicago +1 312 467 1331 | Dubai +971 4 584 6956 | Hong Kong +852 2623 0371 | Latin America (Miami) +1 305 827 5912 | London +44 207 961 4120 | Los Angeles +1 800 233 1614 | Melbourne +61 3 9939 8543 | Mexico City +55 5010 7600 | Mumbai +91 22 6284 5050 | Nantong +86 400 800 7429 | New York +1 212 953 7429 | Paris +33 (0) 1 81 22 44 39 | San Francisco +1 415 955 1920 | Santiago +562 2431 5000 x 550 | São Paulo +55 11 3071 1702 | Shanghai +86 21 3338 4000 | Singapore +65 6733 1811 | Sydney +1 800 556 302

© 2024 Shaw Industries Group, Inc., a Berkshire Hathaway Company  
May 20, 2024